

Linea Stile Italiano

Collezione MP
Marmo di Venezia[®]
Travertino

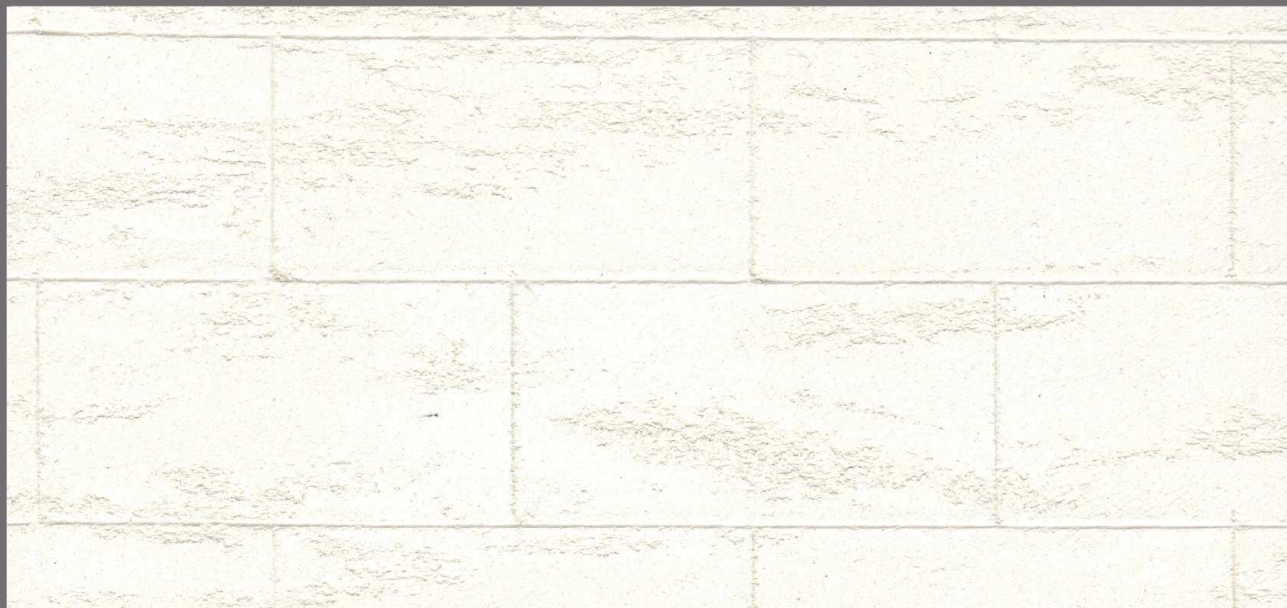


the Italian Style



Linea Stile Italiano

Coccio Antico effetto Travertino Bianco/*White*



Coccio Antico effetto Travertino Giallo/*Yellow*



Coccio Antico effetto Travertino Bianco/*White* - puntinato/*pitted*



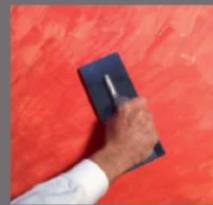
**Applicazione
Stucco di Venezia**



Rasare con Plastuc Tipo A (Opzionale) ed applicare mano di fondo con Smartcoat grana 0,1 mm.
Level with Plastuc Tipo A (Optional) and apply ground coat with Smartcoat grain 0,1 mm.



Applicare Stucco di Venezia a colpi di spatola incrociata.
Apply Stucco di Venezia crossing the strokes by spatula.



Lamare la superficie con frattone d'acciaio.
Blade the surface with stainless steel trowel.



Applicare Cera per Stucco di Venezia con frattone d'acciaio (Opzionale).
Apply Cera per Stucco di Venezia by stainless steel trowel (Optional).

Resa/Coverage
N° mani/coats

15-20 m²/l
1

8-10 m²/ Kg
2-3

-
-

12-35 m²/l
1

**Applicazione
Marmo di Venezia^{6*}**



Rasare con Plastuc Tipo A (Opzionale) ed applicare mano di fondo con Smartcoat grana 0,1 mm.
Level with Plastuc Tipo A (Optional) and apply ground coat with Smartcoat grain 0,1 mm.



Applicare Rasato Fine con frattone d'acciaio.
Apply Rasato Fine by stainless steel trowel.



Applicare Marmo di Venezia con frattone d'acciaio.
Apply Marmo di Venezia by stainless steel trowel.



Lamare la superficie con frattone d'acciaio.
Blade the surface with stainless steel trowel.

Resa/Coverage
N° mani/coats

15-20 m²/l
1

2-3 m²/Kg
1

4-7 m²/Kg
2-3

-
-

**Applicazione
Rasato Fine***



Rasatura con Plastuc Tipo A (Opzionale).
Levelling with Plastuc Tipo A (Optional).



Mano di fondo con Smartcoat grana 0,1 mm.
Ground coat with Smartcoat grain 0,1 mm.



Applicare 1° strato di Rasato Fine con frattone d'acciaio.
Apply 1st layer of Rasato Fine stainless steel trowel.



Applicare strato finale di Rasato Fine lamando la superficie con frattone d'acciaio.
Apply final layer of Rasato Fine, blading the surface by stainless steel trowel.

Resa/Coverage
N° mani/coats

2-4 m²/Kg
1-2

15-20 m²/l
1

2-3 m²/Kg
1-2

2-3 m²/Kg
1

**Applicazione
Rasato Travertino***



Rasare con Plastuc Tipo A (Opzionale) ed applicare mano di fondo con Smartcoat grana 0,1 mm.
Level with Plastuc Tipo A (Optional) and apply ground coat with Smartcoat grain 0,1 mm.



Applicare Rasato Travertino con frattone d'acciaio.
Apply Rasato Travertino by stainless steel trowel.



Premere Rasato Travertino con utensile Matt disegnando la superficie.
Press on Rasato Travertino with Matt brush and design a pattern.



Applicare Antica Patinatura Perla con spatola d'acciaio.
Apply Antica Patinatura Perla by stainless steel spatula.

Resa/Coverage
N° mani/coats

15-20 m²/l
1

1,5-2,5 m²/Kg
2-3

-
-

14-20 m²/l
1

**Applicazione
Coccio Antico
effetto Travertino***



Rasatura con Plastuc Tipo A (Opzionale).
Levelling with Plastuc Tipo A (Optional).



Mano di fondo con Smartcoat grana 0,1 mm.
Ground coat with Smartcoat grain 0,1 mm.



Applicare Coccio Antico effetto Travertino con frattone d'acciaio.
Apply Coccio Antico effetto Travertino by stainless steel trowel.



Premere su Coccio Antico effetto Travertino con utensile appuntito e creare l'effetto mattoncino.
Create the brick pattern with a pointed tool pressing on Coccio Antico effetto Travertino.

Resa/Coverage
N° mani/coats

2-4 m²/Kg
1-2

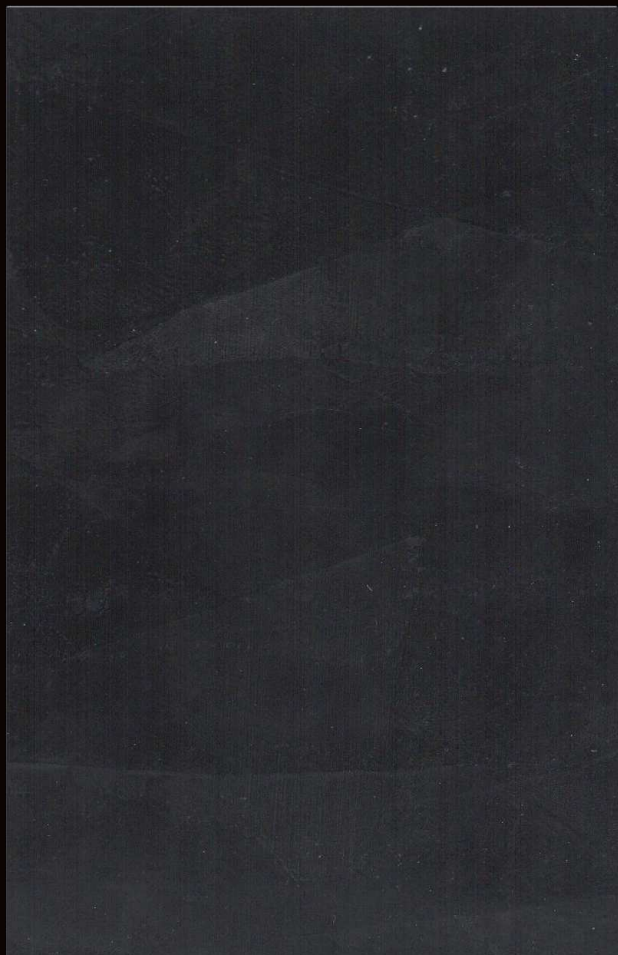
15-20 m²/l
1

1,2- 1,5 Kg/m²
2-3

-
-

Stucco di Venezia

6005 GP 4



Marmo di Venezia®

6006 GP 4



Rasato Fine lamato

6007 GP 2



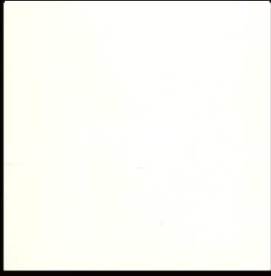
Rasato Travertino + Antica Patinatura Perla

6008 GP 2

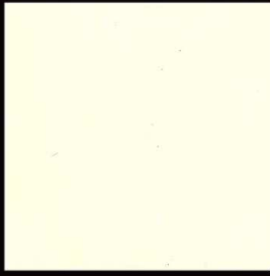


Linea Stile Italiano

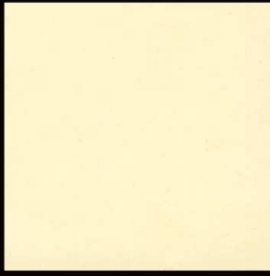
6101 GP 1



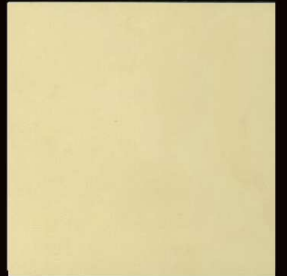
6102 GP 1



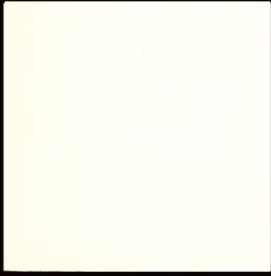
6103 GP 1



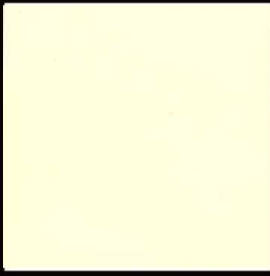
6104 GP 1



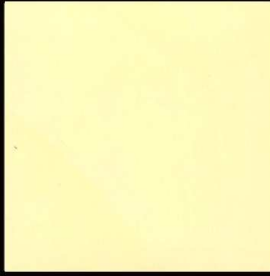
6105 GP 1



6106 GP 1



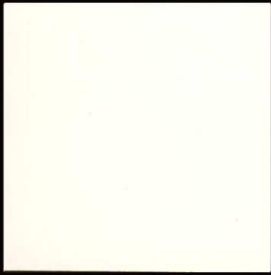
6107 GP 1



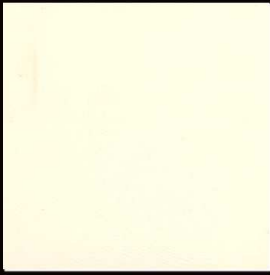
6108 GP 2



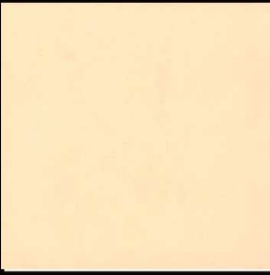
6109 GP 1



6110 GP 1



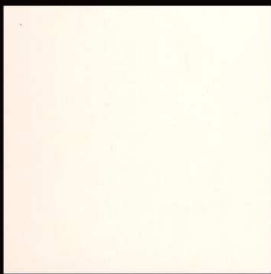
6111 GP 1



6112 GP 1



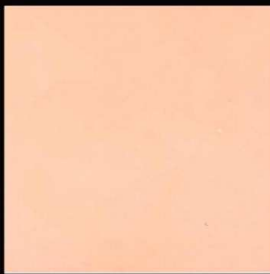
6113 GP 1



6114 GP 1



6115 GP 1



6116 GP 2



6117 GP 1



6118 GP 1



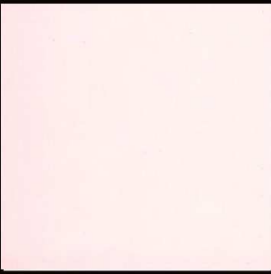
6119 GP 1



6120 GP 2



6121 GP 1



6122 GP 1



6123 GP 1

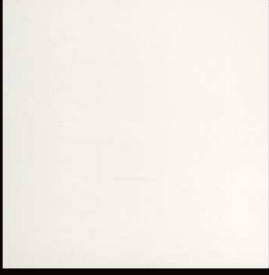


6124 GP 2

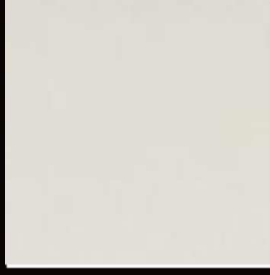


Linea Stile Italiano

6125 GP 1



6126 GP 1



6127 GP 1



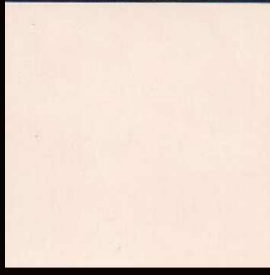
6128 GP 1



6129 GP 1



6130 GP 1



6131 GP 1



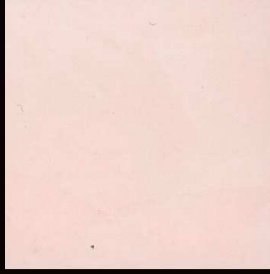
6132 GP 1



6133 GP 1



6134 GP 1



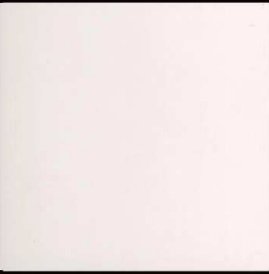
6135 GP 1



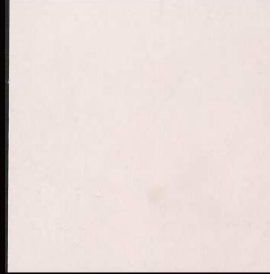
6136 GP 1



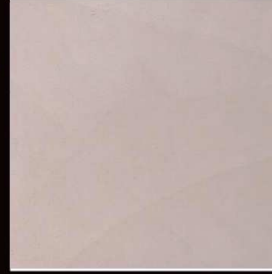
6137 GP 1



6138 GP 1



6139 GP 1



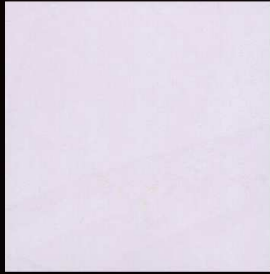
6140 GP 2



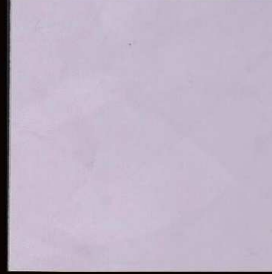
6141 GP 1



6142 GP 1



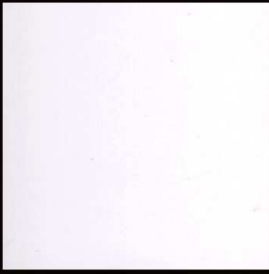
6143 GP 1



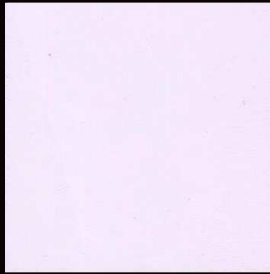
6144 GP 2



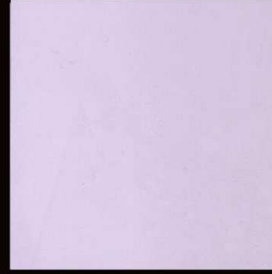
6145 GP 1



6146 GP 1



6147 GP 1



6148 GP 2

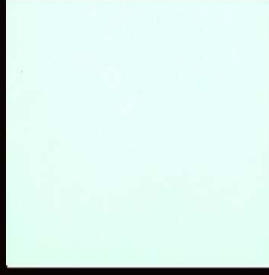


Linea Stile Italiano

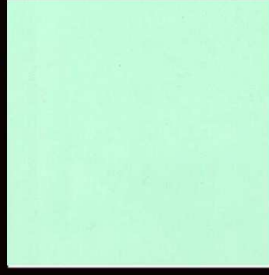
6149 GP 1



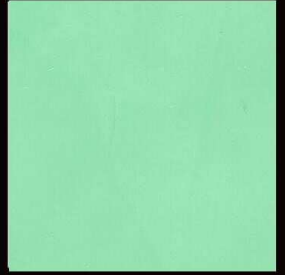
6150 GP 1



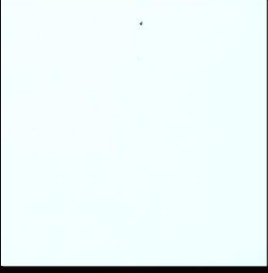
6151 GP 1



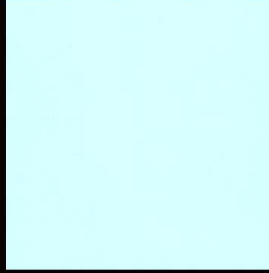
6152 GP 2



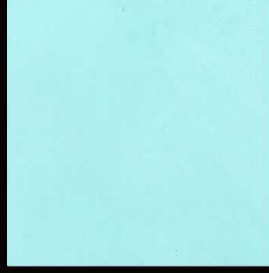
6153 GP 1



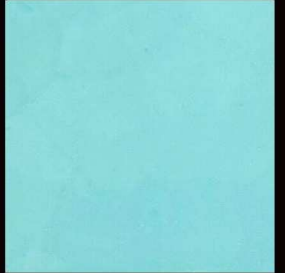
6154 GP 1



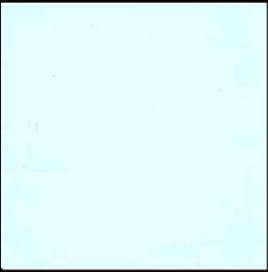
6155 GP 1



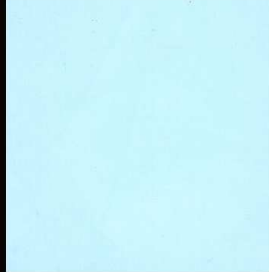
6156 GP 1



6157 GP 1



6158 GP 1



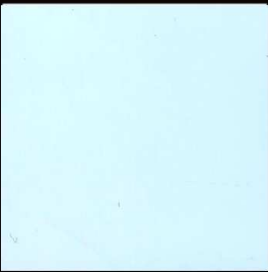
6159 GP 1



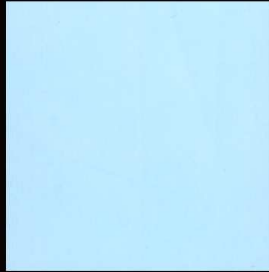
6160 GP 2



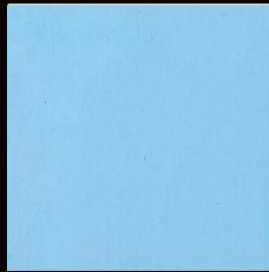
6161 GP 1



6162 GP 1



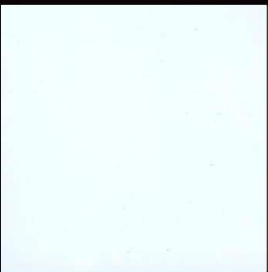
6163 GP 1



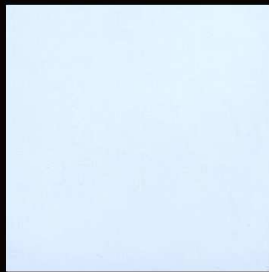
6164 GP 2



6165 GP 1



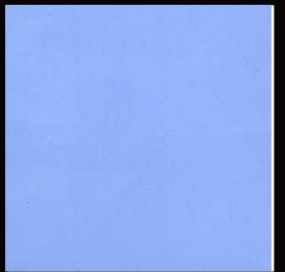
6166 GP 1



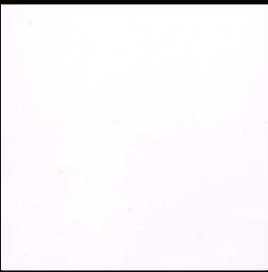
6167 GP 1



6168 GP 2



6169 GP 1



6170 GP 1



6171 GP 1



6172 GP 2



**art. 0847 Marmo di Venezia***

Rivestimento minerale naturale a base di grassello di calce, ad effetto spatolato lucido.

CONFEZIONI:

20 Kg - 5 Kg

art. 0507 Stucco di Venezia

Stucco di pregio ad effetto spatolato lucido per finiture decorative in interni.

CONFEZIONI:

20 Kg - 5 Kg - 1 Kg

art. 0845 Rasato Fine

Rasato di puro grassello di calce a finitura liscia opaca.

CONFEZIONI:

20 Kg - 5 Kg

art. 0846 Rasato Travertino

Intonachino minerale colorato di finitura, in pasta pronto all'uso, a base di calce naturale e cocchio pesto, per la decorazione e protezione di intonaci esterni ed interni, nel classico effetto della pietra naturale TRAVERTINO.

CONFEZIONI:

20 Kg - 5 Kg

art. 0886 Coccio Antico Effetto Travertino

Intonachino minerale colorato di finitura, in polvere, a base di calce naturale e cocchio pesto, per la decorazione e protezione di intonaci esterni ed interni, nel classico effetto della pietra naturale TRAVERTINO.

CONFEZIONI:

20 Kg (Sacchi)

**art. 0847 Marmo di Venezia***

Минеральное покрытие на основе извести с эффектом глянцевой штукатурки.

УПАКОВКА:

20 кг - 5 кг

art. 0507 Stucco di Venezia

Ценная штукатурка для создания ровной, гладкой и глянцевой поверхности при финишной декоративной отделке интерьеров.

УПАКОВКА:

20 кг - 5 кг - 1 кг

art. 0845 Rasato Fine

Шпатлевка на основе беспримесной извести. Используется в качестве финиша и создает гладкий матовый слой.

УПАКОВКА:

20 кг - 5 кг

art. 0846 Rasato Travertino

Цветная отделочная штукатурка на основе минеральных компонентов в виде пасты, готовая к употреблению, на основе натуральной извести и молотой глины. Предназначена для декоративной и защитной отделки внешних и внутренних поверхностей с эффектом "мрамора" TRAVERTINO.

УПАКОВКА:

20 кг - 5 кг

art. 0886 Coccio Antico Effetto Travertino

Отделочная минеральная цветная штукатурка в орешке на основе натуральной извести и толченой терракоты для отделки и защиты внутренних и наружных штукатурок с эффектом натурального камня Травертин.

УПАКОВКА:

20 кг (мешки)

**art. 0847 Marmo di Venezia***

Natural mineral lime based putty with a glossy spatulafinish effect

PACKAGES:

20 Kg - 5 Kg

art. 0507 Stucco di Venezia

High quality stucco with a shiny spatula effect for decorative interior finishes.

PACKAGES:

20 Kg - 5 Kg - 1 Kg

art. 0845 Rasato Fine

Trowelled pure lime putty for a smooth matt finish.

PACKAGES:

20 Kg - 5 Kg

art. 0846 Rasato Travertino

Mineral finishing coloured plaster, ready to use, lime based for decoration and protection of interior and exterior plasters, in classic natural TRAVERTINO rock effect.

PACKAGES:

20 Kg - 5 Kg

art. 0886 Coccio Antico Effetto Travertino

Mineral finishing coloured plaster, in powder form, lime based for decoration and protection of interior and exterior plaster, in classic natural TRAVERTINO rock effect.

PACKAGES:

20 Kg (Bags)

**art. 0847 Marmo di Venezia***

Revêtement minéral naturel à base de chaux éteinte, à effet spatulé brillant.

POTS:

20 Kg - 5 Kg

art. 0507 Stucco di Venezia

Stuc de valeur à effet spatulé brillant pour finitions décoratives pour intérieurs.

POTS:

20 Kg - 5 Kg - 1 Kg

art. 0845 Rasato Fine

Ras de pure chaux éteinte à finition lisse opaque.

POTS:

20 Kg - 5 Kg

art. 0846 Rasato Travertino

Enduit minéral coloré de finition, en pâte, prêt à l'emploi, à base de chaux naturelle et terre cuite risée, pour la décoration et protection de plâtres intérieurs et extérieurs, dans le classique effet de la pierre naturelle TRAVERTINO.

POTS:

20 Kg - 5 Kg

art. 0886 Coccio Antico Effetto Travertino

Crépi minéral coloré de finition, en poudre, à base de chaux naturelle et terre cuite brisée, pour la décoration et protection de plâtres intérieurs et extérieurs, dans le classique effet de la pierre naturelle TRAVERTINO.

POTS:

20 Kg (sacs)

**art. 0847 Marmo di Venezia***

闪亮刮刀效果由纯熟石灰制成的天然矿产涂料。

包装:

20 公斤 - 5 公斤

art. 0507 Stucco di Venezia

用于室内装潢闪亮刮刀效果的高级灰泥。

包装:

20 公斤 - 5 公斤 - 1 公斤

art. 0845 Rasato Fine Bato Fine

用无光泽平滑修饰平整的纯熟石灰。

包装:

20 公斤 - 5 公斤

art. 0846 Rasato Travertino

彩色矿物石灰修饰, 随时可用的面团, 用于室内和室外灰浆的装饰和保护, 由天然石灰和陶器构成, 有天然石材的石灰华经典效果。

包装:

20 公斤 - 5 公斤

art. 0886 Coccio Antico Effetto Travertino

彩色矿产石灰修饰, 粉状, 由天然石灰和陶器构成, 用于室内和室外灰浆的装饰和保护, 有天然石材的石灰华经典效果。

包装:

20 公斤 (袋)



Le tonalità qui riprodotte debbono considerarsi, per ovvi motivi tecnici, indicative. MP consiglia una verifica del colore scelto tramite un campione dal vivo.

For obvious technical reasons, the colours shown here must be considered to be purely indicative. MP recommends sample trials with the colour chosen.

Die hier dargestellten Farbtöne können aus offensichtlichen technischen Gründen nur als annähernde Wiedergaben der angebotenen Produkte angesehen werden. MP empfiehlt die Überprüfung der gewählten Farbe anhand eines Musters.

Pour des motifs techniques évidents, les tonalités reproduites sur ces pages doivent être considérées comme indicatives. MP conseille de faire un essai pour vérifier la couleur choisie.

Zbog tehničkih razloga, prezentirani tonaliteti boja smatraju se oglednicima. MP savjetuje da probate izabranu boju neposredno na maloj površini.

В связи с очевидными техническими ограничениями, воспроизведенные здесь тона должны считаться приближительными. Компания MP рекомендует проверять выбранный цвет, используя "живой" образец.

По причине тональности, порою очевидны технические причины, треба да се считат за ориентирљани. MP препоручава проверку на изабрани цвет посредствома реалног образца.

الألوان الميينة هنا يجب أخذها بعين الاعتبار لأغراض فنية وتكثيرية. ننصح شركة MP بعمل تجربة للون المختار بواسطة عينة حية.

鉴于明显的技术原因, 这里再现的颜色应视为近似的。MP 建议亲临现场取样来核实所选择的颜色。

Per quanto non indicato si rimanda alla relativa scheda tecnica e scheda di sicurezza del prodotto.

For any information not given here, please refer to the respective technical information sheet and product safety sheet.

Für weitere Informationen und Angaben, die hier nicht aufgeführt sind, wird auf die Technischen Daten und das Sicherheitsdatenblatt des jeweiligen Produktes verwiesen.

Pour toute information supplémentaire, consulter la fiche technique et la fiche de sécurité du produit.

Vi nenavedeni podatki nalože se u tehničkom i sigurnosnom listu proizvoda.

Для неуказанных характеристик делается отсылка к соответствующей карте технических характеристик и карте безопасности изделия.

Za vsakogar ne poenono, se obračajte za informacijo krm svaotnostna tehnika karta i bioložina za bezopasna ekoložacija na produktu.

بخصوص المواضيع الغير ميينة هنا, يجب الرجوع إلى البيطقة الفنية وبيطقة امان المنتج.

关于没有说明的信息, 请参考相关的技术表和产品安全数据表。

AZIENDA CON SISTEMA DI GESTIONE QUALITÀ CERTIFICATO DA DNV



Colorificio MP s.r.l.
via G.pastore, 2
47922 Rimini (RN) - ITALY
tel. +39.0541.734086 Fax +39.0541.734282
mp@colorificiomp.it
mp@mp-paints.com
www.colorificiomp.it
www.mp-paints.com

