



Application:

By spray.

Thin:

With special thinner.

Drying time:

Dry to touch in 20
minutes.

Covering capacity:

40m² per US Gallon.

Packaging:

In pails of 20L

In cans of 1 US Gallon.

Manufactured by Harfouche for Trading & Industry EST.
P.O. Box: 62 cornet Chehwan Lebanon
www.pastelpaints.com - pastel@pastelpaints.com



Pastel Paints

**HAMMER
FINISH
& ALUMINIUM**



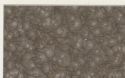
Pastel
Paints



110 SILVER GREY



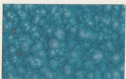
112 PASTEL GREY



152 HAZEL



162 BRIGHT GOLD



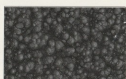
125 LIGHT BLUE



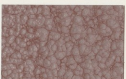
132 LIGHT OLIVE GREEN



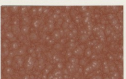
182 PASTEL PURPLE



197 DARK PASTEL



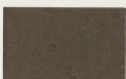
142 BRONZE



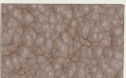
172 LIGHT BROWN



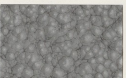
572 CLASSIC FALL



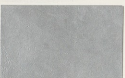
571 METAL



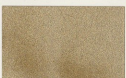
176 DEEP BROWN



193 DEEP SILVER GREY



600 ALUMINIUM



602 GOLD